

# Select Extent for Map Service

To effectively check a map or image service the GeoSystems monitor must establish a valid map extent (x, y min/max coordinates) that results in the service returning something other than a blank (or white) image. The automated routines that initially establish map or image service monitoring points perform a number of things to try to establish a valid map extent. In most cases it does so successfully.

There are, however, situations where it is unable to do so. In these situations the map or image service in the GeoSystems Monitor will appear to be down (red) and the error column for the point will be set to "NoImage". When this occurs the icon for the Map Service Extent Picker tool can be used.

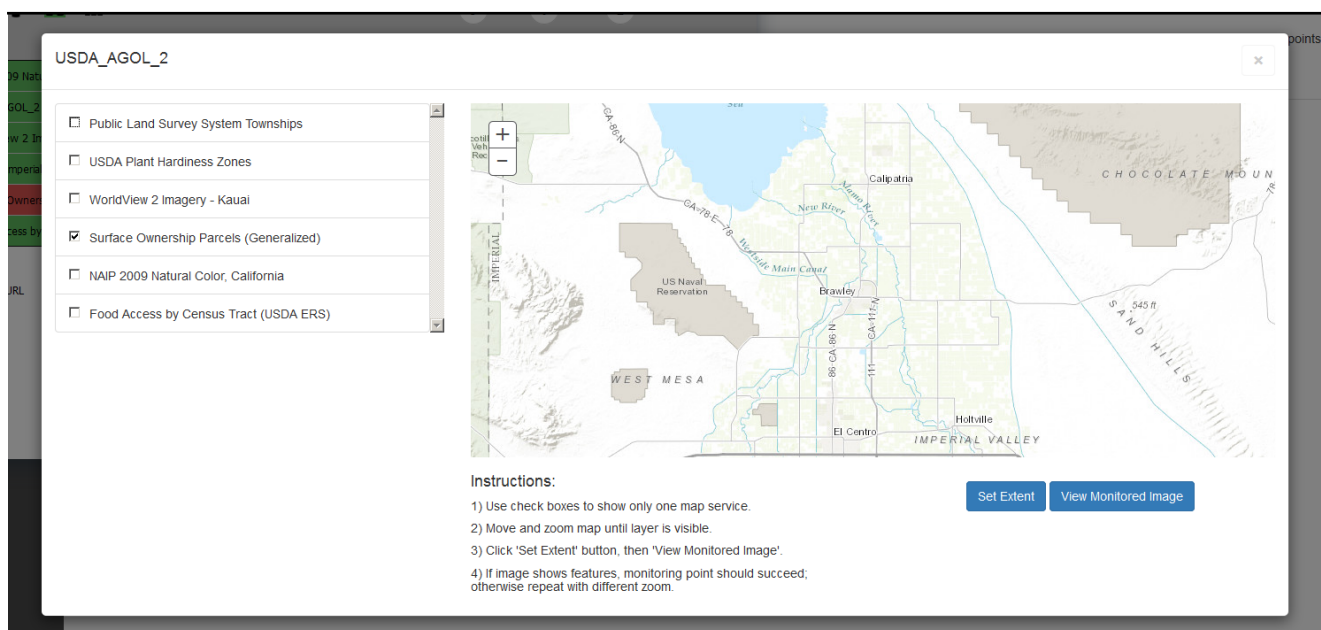


## EXAMPLE:

1. Click on the **[Status Points]** button for the container that has a down tile map service.

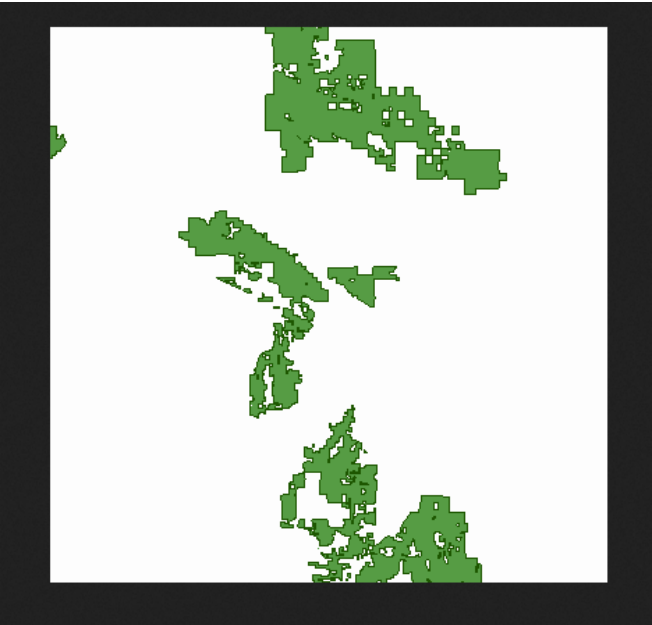


2. Scroll through the list to find the service/point that is down. Click on it to display the settings for the service/point. If the point is a map service, the map service extent picker icon will turn from grey to black.
3. Clicking on the extent picker icon will bring up the Extent Picker panel below. Follow the instructions on the page (make sure to **[Set Extent]** and **[View Monitored Image]**).

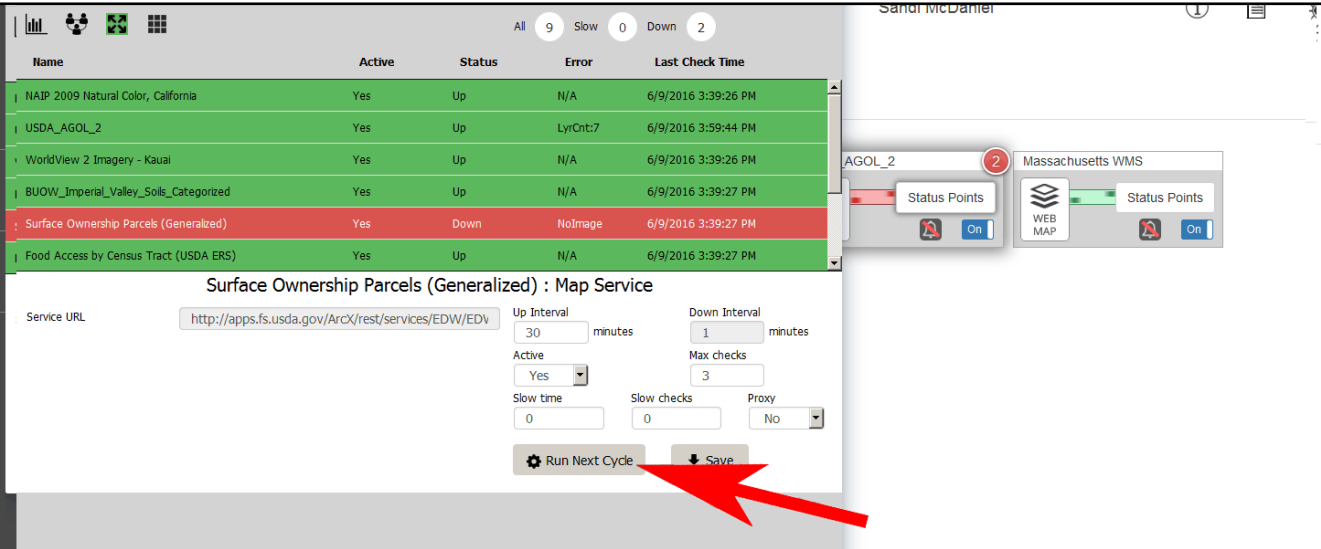


When you've clicked **[View Monitored Image]** an image that shows color (like the one below)

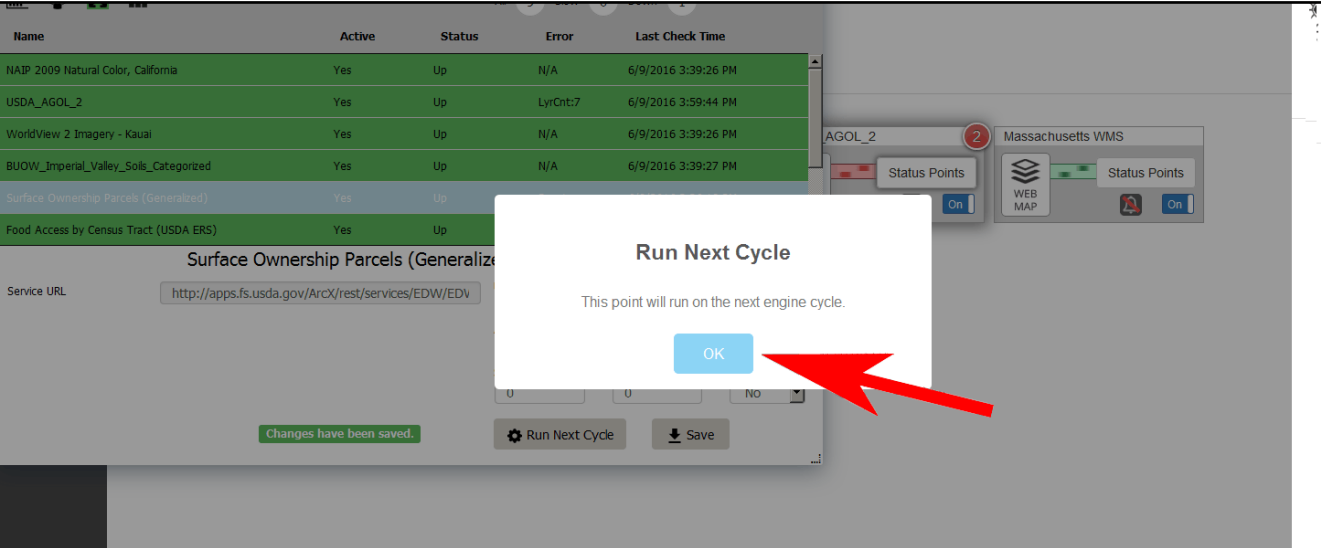
should be shown. If no color, go back, **[Reset]** and try again. Once you have color, close out the Extent Picker pane to go back to the status points.



Click on the service/point that is down and then click on **[Run Next Cycle]** to run the check using the selected map extent.



A pop-up will appear to make sure you want to run next cycle, click **[Ok]**.



---

Article ID: 247

Last updated: 15 Aug, 2018

Revision: 3

GeoSystems Monitor Enterprise -> Product Guide v4.0 -> Working with Monitoring Points -> Select Extent for Map Service

<http://www.vestra-docs.com/index.php?View=entry&EntryID=247>