

Installing GeoSystems Monitor Enterprise

1. Once you have acquired the zipped installation folder, right click on it and select "Extract All..." to extract the contents to your computer. You can extract the contents anywhere, just remember the location that you selected.

Note: Users should extract the installation zip file on their local machine. Extracting the zip file from a network drive to the target machine will cause Microsoft Windows to flag the installer's executable dependencies as security threats. This will cause the installer to prompt the user multiple times throughout the install process.

2. After the extraction is done, locate and open the newly extracted folder.

3. Right click on the GeoSystemsInstall.exe and select "Run as administrator".

Appears to be a fresh install of GeoSystems Monitor should be present in red like the screenshot below.

The default install location is: **Program Files (x86)\GeoSystemsMonitor**

The installer will install the following:

GeoSystems Monitor Engine - The core windows application

GeoSystems Monitor JavaScript UI - The UI component

iisnode - IIS module to allow node.js to run inside Windows IIS

node.js - JavaScript run-time environment

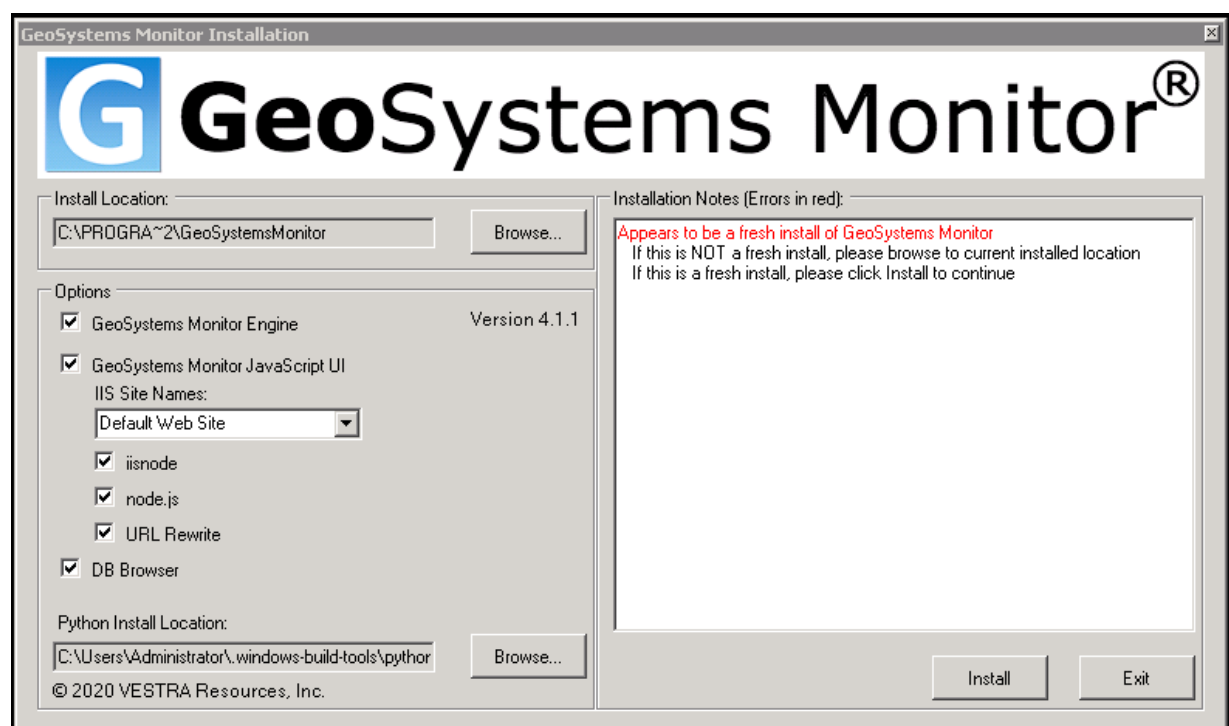
URL Rewrite - IIS module to allow URL rewrites

DB Browser - lightweight SQLite browser

The installer will also try and locate a version of Python on the machine.

Make sure the Python location is correct before continuing.

Click on Install to continue



4. Accept the End User License and Support Agreement to continue

End User License Agreement ✕

VESTRA GEOSYSTEMS MONITOR
END USER LICENSE AGREEMENT ("EULA")

IMPORTANT: READ CAREFULLY THE FOLLOWING TERMS AND CONDITIONS BEFORE DOWNLOADING, INSTALLING OR USING THE VESTRA GEOSYSTEMS MONITOR AND ACCOMPANYING DOCUMENTATION. BY CLICKING ON THE 'ACCEPT' BUTTON, THE ORGANIZATION THAT HAS ORDERED THE GEOSYSTEMS MONITOR ("USER") IS AGREEING TO BE BOUND BY ALL THE TERMS AND CONDITIONS OF THIS EULA, WHICH IS A LEGAL AGREEMENT WITH VESTRA RESOURCES, INC., A CALIFORNIA CORPORATION, 5300 AVIATION DRIVE, REDDING, CA 96002 ("VESTRA"). IF USER DOES NOT AGREE WITH ANY TERMS AND CONDITIONS OF THIS EULA, DO NOT PROCEED WITH THE DOWNLOAD OR INSTALLATION, AND CONTACT VESTRA OR THE AUTHORIZED VESTRA RESELLER ("RESELLER") FROM WHICH IT WAS ORDERED.

1. Grant of License.
(a) THE GEOSYSTEMS MONITOR IS ONLY LICENSED, AND IS NOT SOLD, TO USER. VESTRA grants to User a non-exclusive, non-transferable, limited license to use the VESTRA GeoSystems Monitor ("GeoSystems Monitor") for which a valid license activation key has been issued by VESTRA, including related manuals and other documentation in written or electronic form. User's use of the GeoSystems Monitor shall be limited to its own internal purposes in accordance with the provisions in this EULA. The EULA license is granted solely to User, and not by implication or otherwise to any other party.

2. License Type.

☒ I agree with the above END USER LICENSE AGREEMENT.
☐ I DO NOT agree with the above END USER LICENSE AGREEMENT.

VESTRA GEOSYSTEMS MONITOR
SUPPORT AGREEMENT ("AGREEMENT")

IMPORTANT: READ CAREFULLY THE FOLLOWING TERMS AND CONDITIONS FOR THE PROVISION BY VESTRA RESOURCES, INC., A CALIFORNIA CORPORATION, 5300 AVIATION DRIVE, REDDING, CA 96002 ("VESTRA") OF MAINTENANCE, SUPPORT AND CUSTOM SERVICES ("SUPPORT SERVICES") FOR VESTRA GEOSYSTEMS MONITOR SOFTWARE LICENSED UNDER AN END USER LICENSE AGREEMENT ("EULA"). BY CLICKING ON THE 'ACCEPT' BUTTON, THE ORGANIZATION THAT IS LICENSED BY THE EULA ("CUSTOMER") IS AGREEING THAT THE SUPPORT SERVICES WILL BE GOVERNED BY THE TERMS AND CONDITIONS OF THIS AGREEMENT. IF CUSTOMER DOES NOT AGREE WITH THIS AGREEMENT, DO NOT ACCEPT IT, AND CONTACT VESTRA OR THE AUTHORIZED VESTRA RESELLER ("RESELLER") FROM WHICH THE GEOSYSTEMS MONITOR WAS ORDERED, AS APPLICABLE.

1. Available Support Services
(a) YR1 No-Charge Services: Customer is entitled, within the first year from its download of the GeoSystems Monitor, to receive a fixed number of non-chargeable support hours ("YR1 Included Hours") based on the license level that was ordered ("License Level"), consisting of standard installation support, use instruction, bug fixes, updates, new version releases and upgrades as are provided generally to VESTRA'S licensee base (see Exhibit "A"). YR1 No-Charge Services can be accessed by Customer at any time within the first year as long as its EULA is still in effect. Unused YR1 Included Hours expire at the end of the first year, and do not roll over into subsequent years.
(b) YR1 Additional Services: If within the first year from download of the GeoSystems Monitor Customer exceeds its YR1 Included Hours, Customer can request additional standard support for the first year, and subject to VESTRA's resource availability such additional

☒ I agree with the above SUPPORT AGREEMENT.
☐ I DO NOT agree with the above SUPPORT AGREEMENT.

Continue

5. The installer will now go through a number of steps to install GeoSystems Monitor.

You will see feedback from the installer in the right hand side text box.

Also, an InstallLog.txt file will be created at the same location the installer is ran from.

6. Once the installer has finished, clicking **Finish** will close the installer.



NOTE:

After completing the installation, please refer to [Getting Started - Logging In](#) for important first steps in configuring the application.

Article ID: 352

Last updated: 04 Sep, 2020

Revision: 5

GeoSystems Monitor Enterprise -> Product Guide v4.1 - 4.2 -> Installation -> New Installation -> Installing GeoSystems Monitor Enterprise

<http://www.vestra-docs.com/index.php?View=entry&EntryID=352>