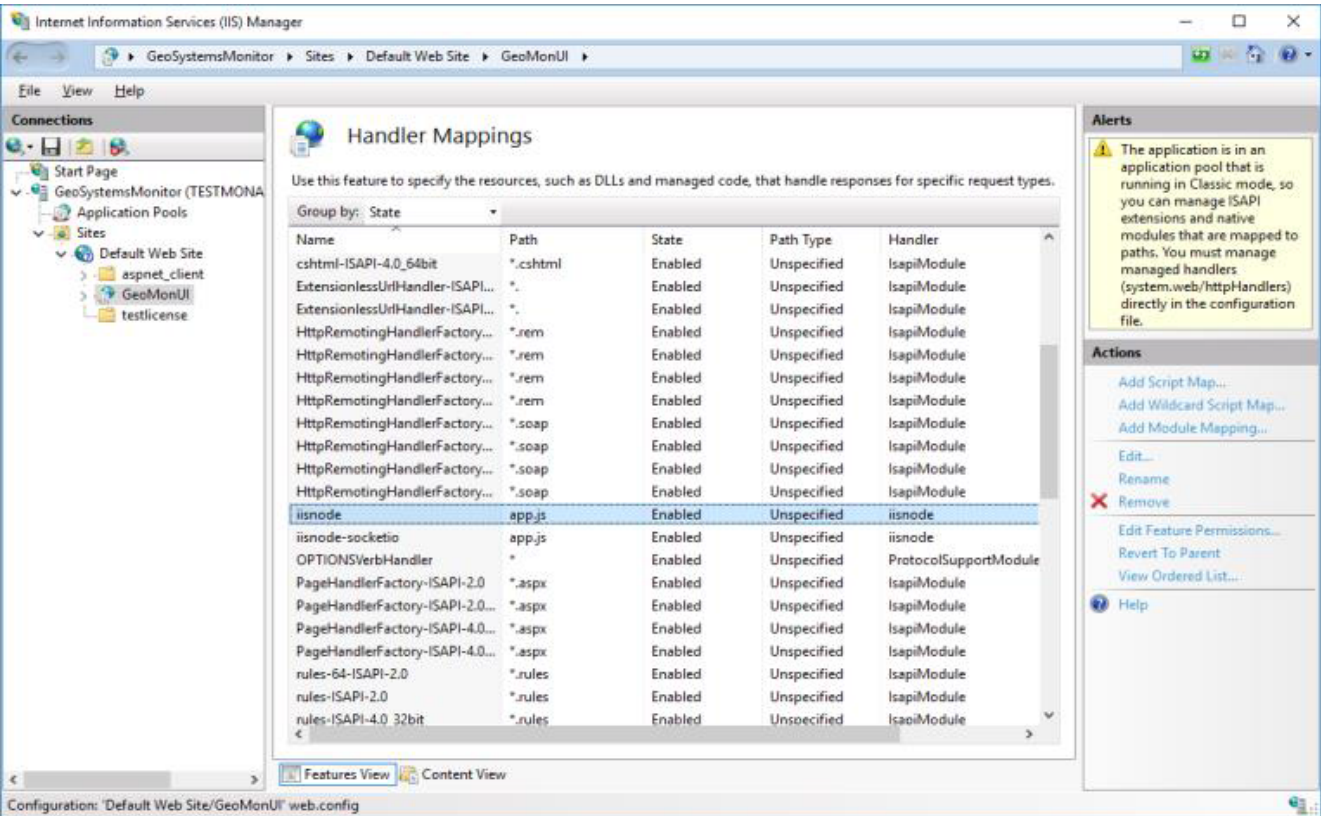
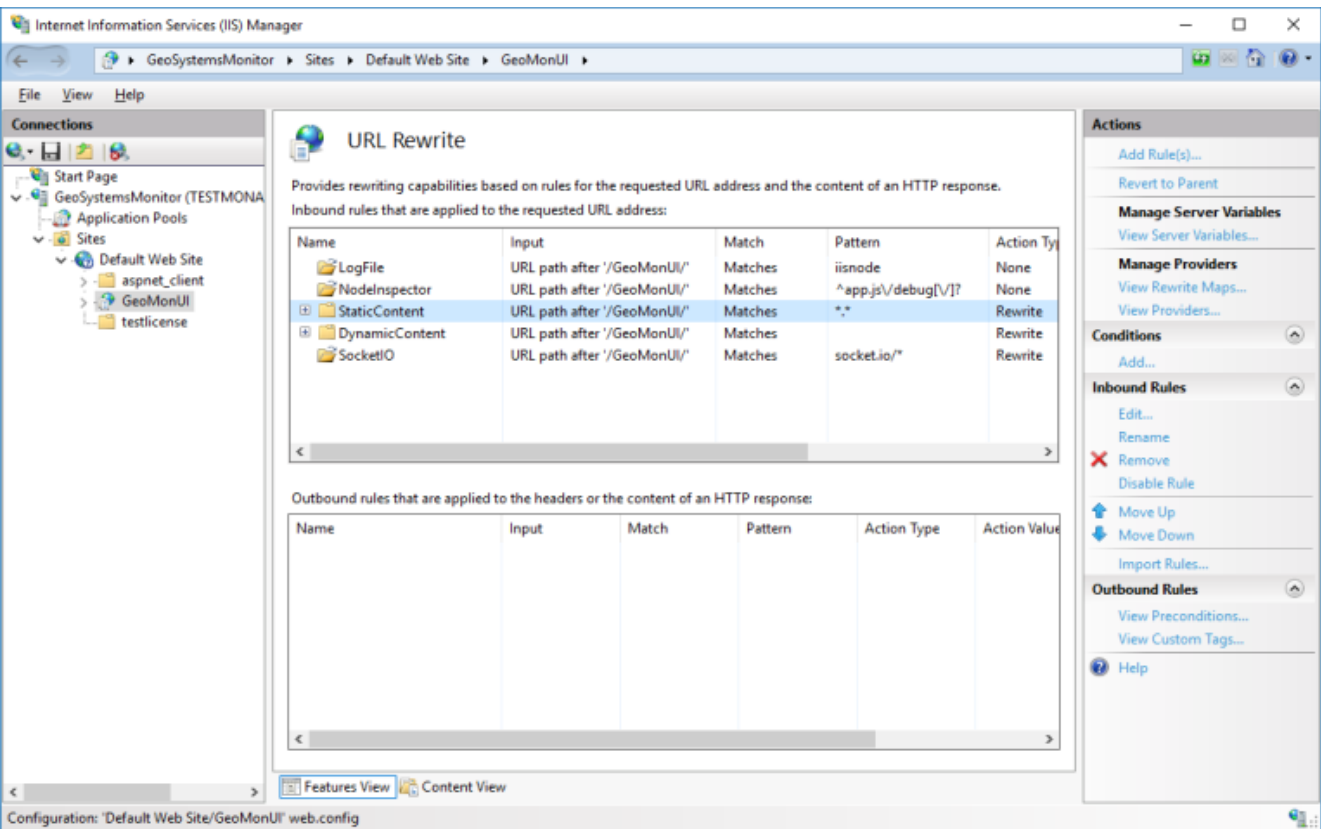


IIS Information Continued

Handler Mappings

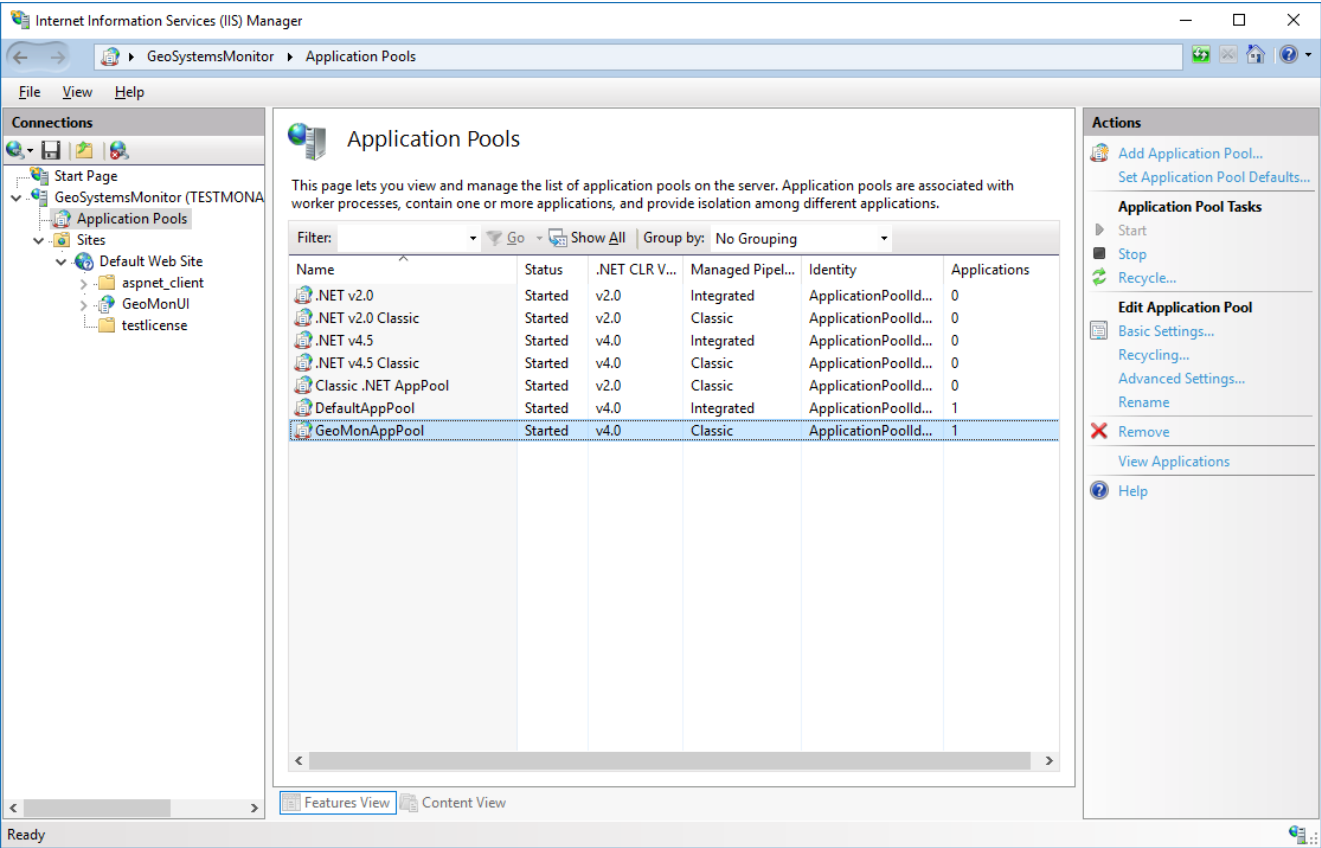


URL Rewrite

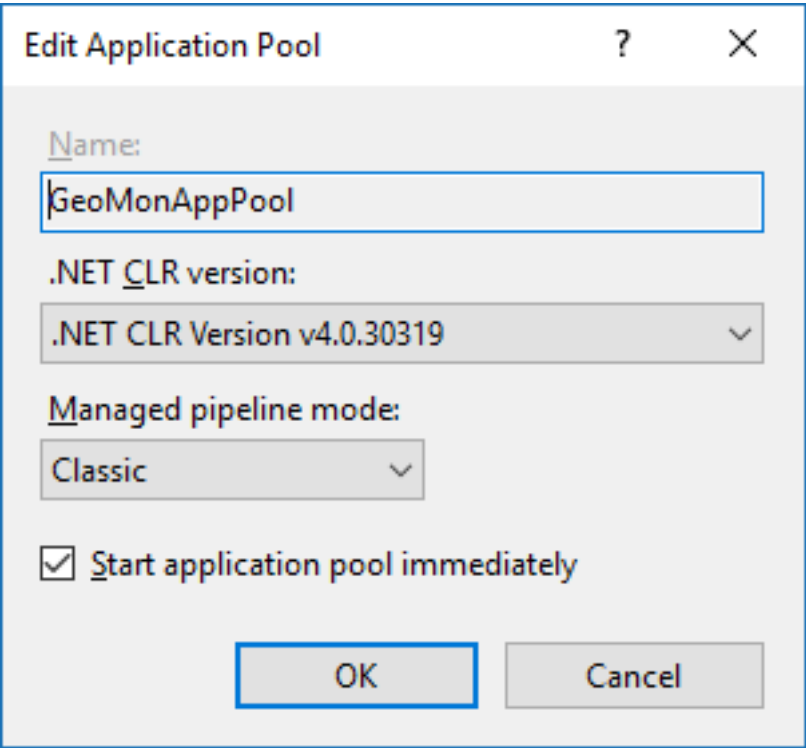


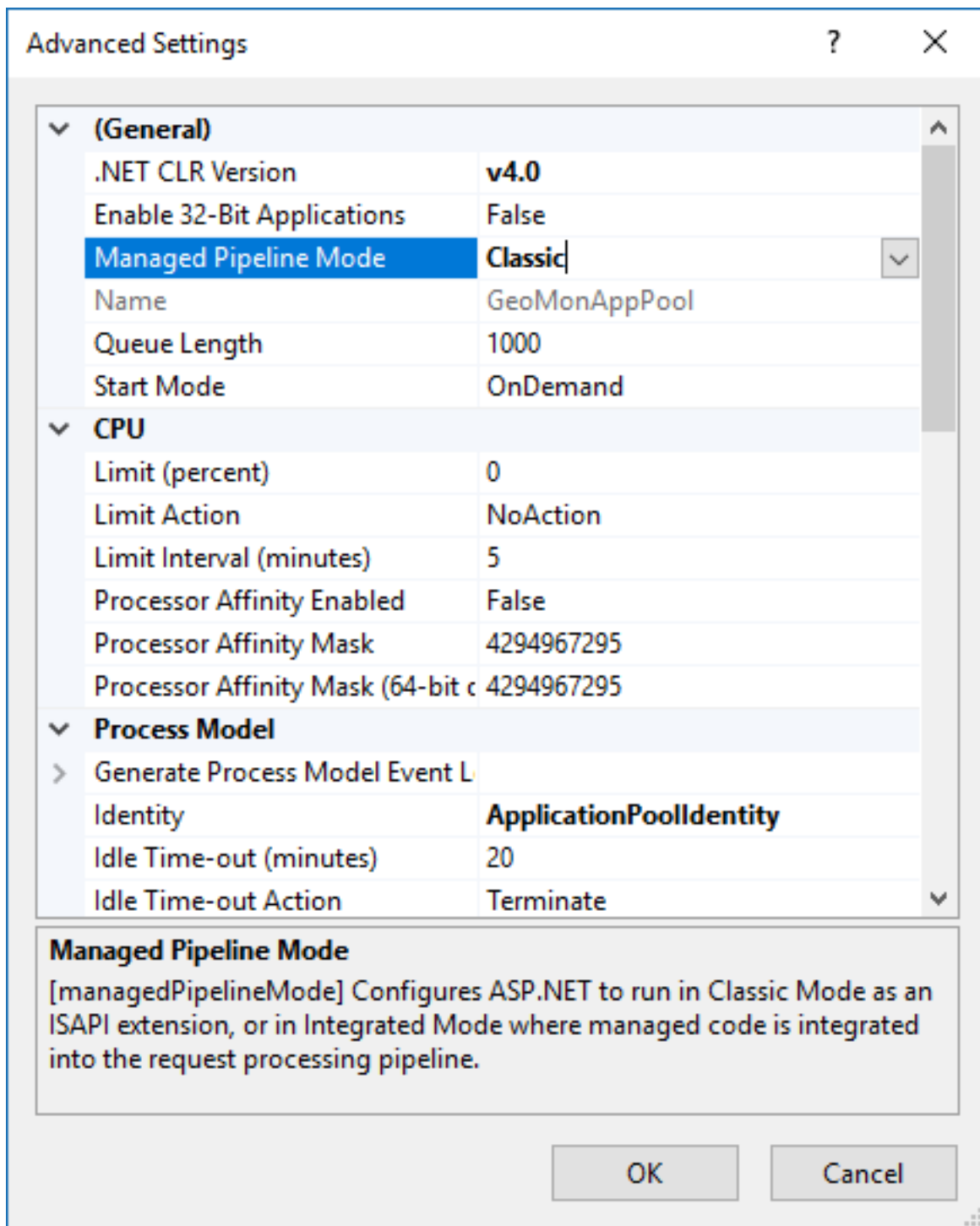
Application Pool

An Application pool in IIS (GeoMonAppPool) is created for the GeoMonitor web application.



GeoMonAppPool Settings





Article ID: 358

Last updated: 26 Dec, 2019

Revision: 1

GeoSystems Monitor Enterprise -> Product Guide v4.1 - 4.2 -> Installation -> New Installation -> IIS Information
Continued

<http://www.vestra-docs.com/index.php?View=entry&EntryID=358>